

FRONTIER CENTRAL SCHOOL DISTRICT



2018 Capital Project - Phase 1 Project Update May 2019



Brief updates of work are highlighted below.

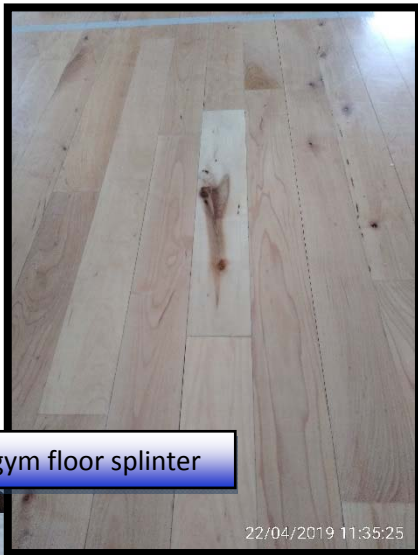
Completed work

- No further sitework will be completed until around late June. Actual re-start date is weather dependent.
- Work completed since last report;
 - High School**
 - Replacement of main gym floor splintered wood.
 - Bus Garage**
 - No work. All work at the Bus Garage has been completed.
 - Blasdell Elementary School**
 - No work. All work at Blasdell Elementary School has been completed.
 - Cloverbank Elementary School**
 - No work. All work at Cloverbank Elementary School has been completed.
 - Pinehurst Elementary School**
 - No work. All work at Pinehurst Elementary School has been completed.
 - Big Tree Elementary School**
 - Manufacturers roof walkthrough has been completed and roof work accepted.
 - Removal of protective roof film has been completed.
 - Punchlist has been completed.

Remaining work

- Work yet to be completed;
 - High School**
 - Sidewalk replacement near Media Center (Summer 2019) • Replacement of parking lots east of the High School (Summer 2019).
 - Select catch basin replacement work will begin June 20th with full scale construction beginning July 1st.
 - Big Tree Elementary School**
 - Replacement of Big Tree parking lots (Summer 2019) • Installation of new Big Tree parking lot (Summer 2019) •
 - Remaining work will begin June 24th at new front lot and some storm work.

Progress Photos



Before and after HS main gym floor splinter

22/04/2019 11:35:25



Before and after protective roof film removed

25/04/2019 14:51:17

Jan 4, 2019 11:01:33 AM



Before and after protective roof film removed

25/04/2019 14:48:34

Project Schedule Update

- 2019 Phase 1 work (Start of exterior work is highly weather dependent. Dates below are subject to change based on actual weather conditions)

High School

- Sidewalk replacement near Media Center – July 1st to August 31st.
- High School east parking lots – Catch Basins – June 20th to August 31st.
- High School east parking lots – Replacement – July 1st to August 31st.

Big Tree Elementary

- Big Tree new parking lot installation – June 24th to August 31st.
- Big Tree existing parking lot replacement – July 5th to August 31st.

Project Budget Update

	Description	Phase 1	Change Orders	Grand Totals
A.	General Construction	\$ 2,102,634.00	\$ 15,934.00	\$ 2,118,568.00
B.	Heating & Ventilation			\$ -
C.	Plumbing			\$ -
D.	Electric			\$ -
E.	Site Work	\$ 2,522,094.71	\$ 104,194.71	\$ 2,622,289.42
TOTAL CONSTRUCTION COSTS		\$ 4,624,728.71	\$ 120,128.71	\$ 4,744,857.42
TOTAL INCIDENTAL COSTS (H-Q Inclusive)				965,902.30

GRAND TOTAL	\$ 6,949,874.19
REFERENDUM AMOUNT	\$ 24,000,000.00
TOTAL UNDER / (OVER) BUDGET	\$17,450,125.81